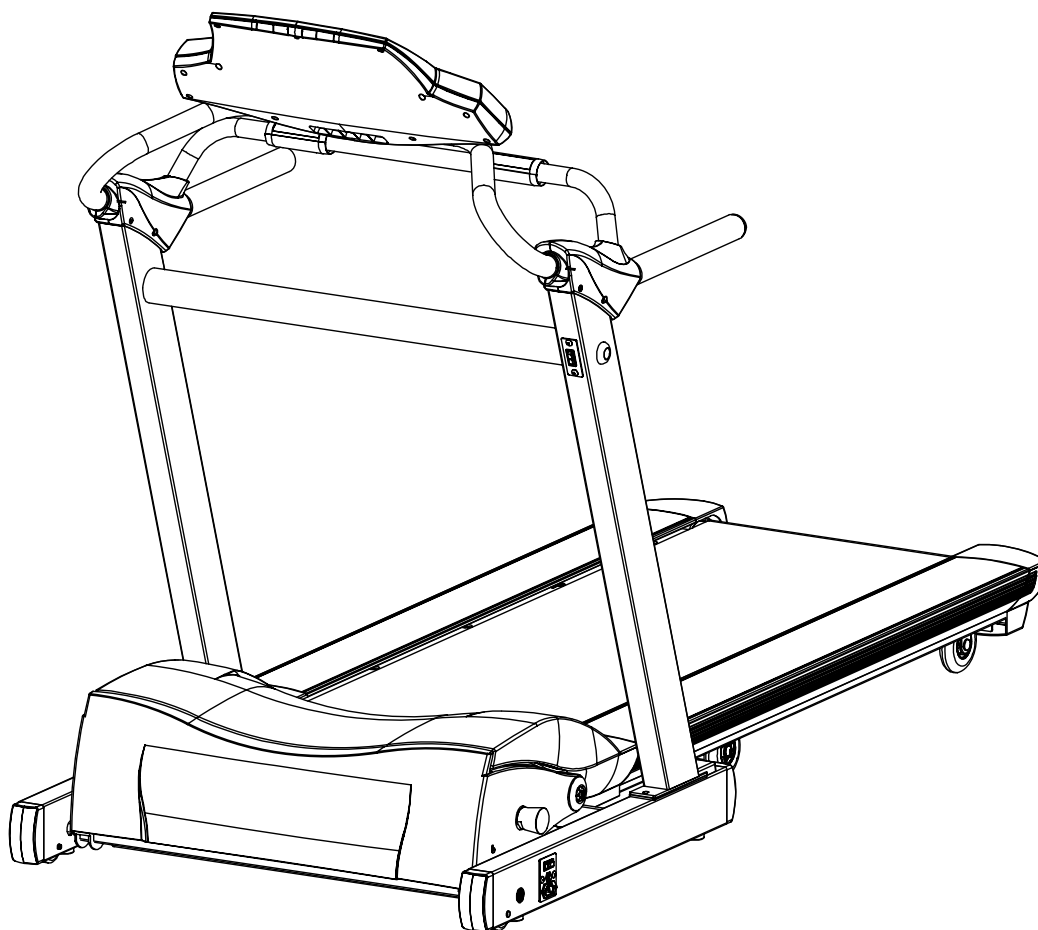


USER'S MANUAL

7.1HR PRO POWER FOLDING TREADMILL

MODEL NUMBER: 7.1HR PRO



USER WEIGHT LIMITATION: 350lbs (160kgs)

SERIAL NUMBER (found on frame):



PRECAUTIONS

Precautions:

WARNING: To reduce the risk of burns, fire, electric shock, or injury to persons, read the following important precautions and information before operating the treadmill. It is the responsibility of the owner to ensure that all users of this treadmill are adequately informed of all warnings and precautions.

- Use the treadmill only as described in this manual.
- Place on a level surface, with 2 meters (6 feet) of clearance behind it. Do not place the treadmill on any surface that blocks air openings. To protect the floor or carpet from damage, place a mat under the treadmill.
- When choosing a location for the treadmill make sure that the location and position permit access to a plug.
- Keep the treadmill indoors, away from moisture and dust. Do not put the treadmill in a garage or covered patio, or near water.
- Do not operate the treadmill where aerosol products are used or where oxygen is being administered.
- Keep children under the age of 12 and pets away from the treadmill at all times.
- The treadmill should not be used by persons weighing more than 350lbs (160kgs).
- Never allow more than one person on the treadmill at a time. Wear appropriate exercise clothing when using the treadmill. Do not wear loose clothing that could become caught in the treadmill. Athletic support clothes are recommended for both men and women. Always wear athletic shoes. Never use the treadmill with bare feet, wearing only stockings, or in sandals.
- When connecting the power cord, plug the power cord into a grounded circuit. No other appliance should be on the same circuit.
- Always straddle the belt and allow it to start moving before stepping onto the belt.
- Always examine your treadmill before using to ensure all parts are in working order.
- Allow the belt to fully stop before dismounting.
- Never insert any object or body parts into any opening.
- Follow the safety information in regards to plugging in your treadmill.
- Keep the power cord away from the incline wheels and do not run the power cord underneath your treadmill. Do not operate the treadmill with a damaged or frayed power cord.
- Always unplug the treadmill before cleaning and/or servicing. Service to your treadmill should only be performed by an authorized service representative, unless authorized and/or instructed by the manufacturer. Failure to follow these instructions will void the treadmill warranty.
- Never leave the treadmill unattended while it is running.

POWER REQUIREMENTS

Power Requirements:

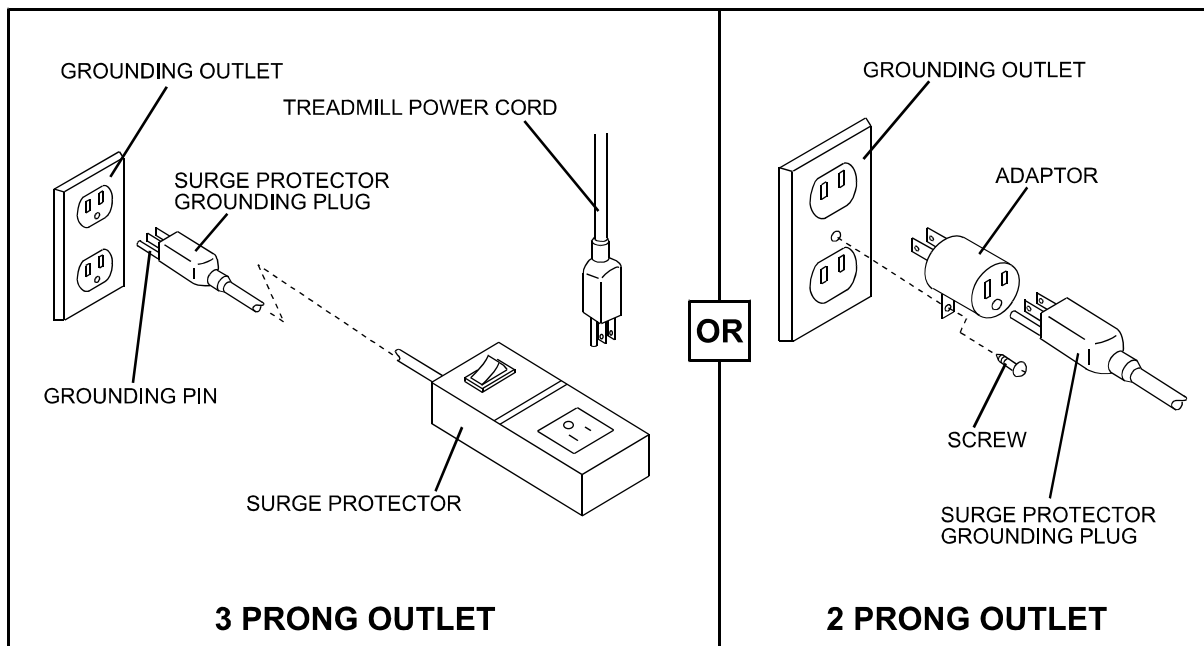
IMPROPER CONNECTION OF THE EQUIPMENT GROUNDING CONNECTOR CAN RESULT IN A RISK OF AN ELECTRIC SHOCK. CHECK WITH A QUALIFIED ELECTRICIAN OR SERVICE MAN IF YOU ARE IN DOUBT AS TO WHETHER THE PRODUCT IS PROPERLY GROUNDED. DO NOT MODIFY THE PLUG PROVIDED WITH THE PRODUCT, IF IT WILL NOT FIT THE OUTLET; HAVE A PROPER OUTLET INSTALLED BY A QUALIFIED ELECTRICIAN.

This treadmill can be seriously damaged by sudden voltage changes in your home's electrical power. Voltage spikes, surges and noise interference can result from weather conditions or from other appliances being turned on or off. To reduce the possibility of treadmill damage, always use a surge protector (not included) with your treadmill.

Surge protectors can be purchased at most hardware stores. The manufacturer recommends a single outlet surge protector with a UL 1449 rating as a Transient Voltage Surge Suppressor (TVSS) with a UL suppressed voltage rating of 400V or less and an electrical rating 120VAC, 15 amps.

This treadmill must be grounded to reduce the risk of electrical shock. Grounding provides a path of least resistance for electric current, should the treadmill malfunction. This treadmill comes with an electrical cord having an equipment-grounding conductor and a grounding plug. Always plug the power cord into a surge protector, and plug the surge protector into an appropriate outlet that is properly installed and grounded in accordance with all local codes and ordinances.

This product is for use on a nominal 120-volt circuit, and has a grounding plug that looks like the plug illustrated in the drawing below.



PREASSEMBLY

Open the boxes:

You are now ready to open the boxes of your new equipment. Make sure to inventory all of the parts that are included in the boxes. Check the Hardware Comparison Chart for a full count of the number of parts included for this product to be assembled properly. If you are missing any parts or have any assembly questions call the manufacturer.

Gather your tools:

Before starting the assembly of your unit, make sure that you have gathered all the necessary tools you may require to assemble the unit properly. Having all of the necessary equipment at hand will save time and make the assembly quick and hassle-free.

Clear your work area:

Make sure that you have cleared away a large enough space to properly assemble the unit. Make sure the space is free from anything that may cause injury during assembly. After the unit is fully assembled, make sure there is a comfortable amount of free area around the unit for unobstructed operation.

Invite a friend:

Some of the assembly steps may require heavy lifting. It is recommended that you obtain the assistance of another person when assembling this product.

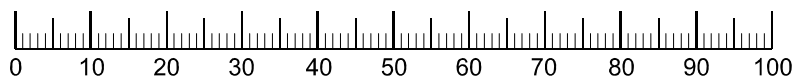
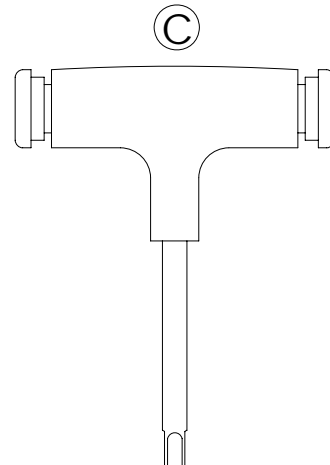
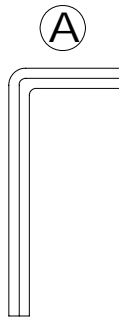
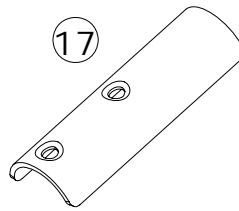
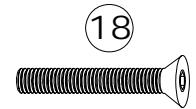
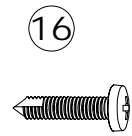
User Weight Limitation:

Please note that there is a weight limitation for this product. **If you weigh more than 350lbs (160kgs) it is not recommended that you use this product. Serious injury may occur if the user's weight exceeds the limit shown here.** This product is not intended to support users whose weight exceeds this limit.

HARDWARE COMPARISON CHART**Hardware chart:**

For your convenience, we have identified the hardware used in the assembly of this product. This chart is provided to help you identify those items that may be unfamiliar to you.

NO.	DESCRIPTION	QTY.
9	Console Support Fixing Plate	2
11	M6 x 15mm Screw	2
16	#8 x 25mm Handlebar Cover Screw	8
17	Handlebar Fixing Plate	2
18	M8 x 25mm Allen Head Bolt	6
19	M8 x 15mm Allen Head Bolt	4
A	Wrench	1
B	Screw Driver	1
C	Allen Wrench	1



MILIMETERS

SMOOTH 7.1HR PRO POWER FOLDING TREADMILL

PARTS LIST

NO.	DESCRIPTION	QTY.	ORDER NO.	NO.	DESCRIPTION	QTY.	ORDER NO.
1	Computer	1	7.1HR PRO-1	35	Front Handlebar	1	7.1HR PRO-35
2	Console Housing-Upper	1	7.1HR PRO-2	36	Upright-Right	1	7.1HR PRO-36
3	Console Housing-Bottom	1	7.1HR PRO-3	37	#8 x 15mm Drill Screw	51	7.1HR PRO-37
4	Rubber Insert	N/A	7.1HR PRO-4	38	Elevation Motor Cover Board	1	7.1HR PRO-38
5	Rubber Cap for Audio Input	N/A	7.1HR PRO-5	39	Power Cord	1	7.1HR PRO-39
6	Safety Key	1	7.1HR PRO-6	40	M6 x 15mm Bolt for Power Plate	2	7.1HR PRO-40
7	Console Support Tube	1	7.1HR PRO-7	41	N/A	N/A	N/A
8	#8 x 10mm Console Housing Screw	10	7.1HR PRO-8	42	Power Plate	1	7.1HR PRO-42
9	Console Support Tube Fixing Plate	2	7.1HR PRO-9	43	N/A	N/A	N/A
10	M3 x 10mm Computer Screw	4	7.1HR PRO-10	44	N/A	N/A	N/A
11	M6 x 15mm Screw	2	7.1HR PRO-11	45	Transport Wheel Shaft	2	7.1HR PRO-45
12	Handlebar Cover-Left #1	1	7.1HR PRO-12	46	M14 x 90mm Bolt	2	7.1HR PRO-46
13	Handlebar Cover-Left #2	1	7.1HR PRO-13	47	Wire Clip	1	7.1HR PRO-47
14	Handlebar Cover-Right #2	1	7.1HR PRO-14	48	Base Frame End Cap	4	7.1HR PRO-48
15	Handlebar Cover-Right #1	1	7.1HR PRO-15	49	Elevation Motor	1	7.1HR PRO-49
16	#8 x 25mm Handle Cover Screw	8	7.1HR PRO-16	50	Cir-Clip	2	7.1HR PRO-50
17	Handlebar Fixing Plate	2	7.1HR PRO-17	51	Transport Wheel	2	7.1HR PRO-51
18	M8 x 25mm Allen Head Bolt	6	7.1HR PRO-18	52	5/16" x 10mm Screw	4	7.1HR PRO-52
19	M8 x 15mm Allen Head Screw	4	7.1HR PRO-19	53	16 x 10mm Spring Washer	1	7.1HR PRO-53
20	#8 x 10mm Screw	N/A	7.1HR PRO-20	54	M10 x 35mm Bolt	1	7.1HR PRO-54
21	Console Tray Fixing Plate	N/A	7.1HR PRO-21	55	Base Frame	1	7.1HR PRO-55
22	Console Tray	N/A	7.1HR PRO-22	56	Diving Tube	1	7.1HR PRO-56
23	Console Tray Cover	N/A	7.1HR PRO-23	57	Micro Switch	3	7.1HR PRO-57
24	Handlebar-Left	1	7.1HR PRO-24	58	Level Adjuster	4	7.1HR PRO-58
25	Handlebar Grip	2	7.1HR PRO-25	59	Fold Up Position Limiting Rod	1	7.1HR PRO-59
26	EKG Pulse Sensor	2	7.1HR PRO-26	60	Fold Up Slipping Rod Sleeve	2	7.1HR PRO-60
27	Handlebar End Cap	2	7.1HR PRO-27	61	Position Limiter	2	7.1HR PRO-61
28	Upright Cross Brace Bolt	2	7.1HR PRO-28	62	Fold Up Slipping Rod	2	7.1HR PRO-62
29	Metal Cap	2	7.1HR PRO-29	63	Wheel Support	1	7.1HR PRO-63
30	Upright-Left	1	7.1HR PRO-30	64	M8 x 40mm Bolt	2	7.1HR PRO-64
31	Console Tray Support Tube	N/A	7.1HR PRO-31	65	PU Wheel	4	7.1HR PRO-65
32	Upright Cross Brace	1	7.1HR PRO-32	66	Motor Bottom Tray	1	7.1HR PRO-66
33	M8 x 25mm Console Tray Support Tube Bolt	1	7.1HR PRO-33	67	Motor Hood	1	7.1HR PRO-67
34	Handlebar-Right	1	7.1HR PRO-34	68	M4 x 25mm Motor Hood Screw	2	7.1HR PRO-68

SMOOTH 7.1HR PRO POWER FOLDING TREADMILL

PARTS LIST

NO.	DESCRIPTION	QTY.	ORDER NO.	NO.	DESCRIPTION	QTY.	ORDER NO.
69	13 x 6.5mm Washer	13	7.1HR PRO-69	106	M5 x 10mm Philip Head Screw	1	7.1HR PRO-106
70	M5 x 12mm Screw	2	7.1HR PRO-70	107	Lock Pin Guider	1	7.1HR PRO-107
71	N/A	N/A	N/A	108	Lock Pin Push Rod	1	7.1HR PRO-108
72	N/A	N/A	N/A	109	Deck Frame	1	7.1HR PRO-109
73	Side Rail-Right	1	7.1HR PRO-73	110	Spring Load Knob	1	7.1HR PRO-110
74	Side Rail-Left	1	7.1HR PRO-74	111	Deck Rubber Cushion	10	7.1HR PRO-111
75	Deck End Cap-Left	1	7.1HR PRO-75	112	Side Rail Guide Block	8	7.1HR PRO-112
76	Deck End Cap-Right	1	7.1HR PRO-76	113	M10 x 16mm Bolt	8	7.1HR PRO-113
77	M8 x 25mm Deck Fixing Bolt	10	7.1HR PRO-77	114	M6 x 70mm Roller Adjuster Bolt	3	7.1HR PRO-114
78	Deck Grounding Metal Sheet-Upper	2	7.1HR PRO-78	115	M8 Nut	10	7.1HR PRO-115
79	#8 x 10mm Wood Screw	7	7.1HR PRO-79	116	15 x 8mm Spring Washer	12	7.1HR PRO-116
80	Running Deck	1	7.1HR PRO-80	117	Board Clip	5	7.1HR PRO-117
81	Front Roller Shaft	1	7.1HR PRO-81	118	Metal Clip	1	7.1HR PRO-118
82	Front Roller	1	7.1HR PRO-82	119	Wheel Shaft	2	7.1HR PRO-119
83	Roller Pulley	1	7.1HR PRO-83	120	M8 Nylon Nut	3	7.1HR PRO-120
84	Running Belt	1	7.1HR PRO-84	121	Running Deck Belly Pan	1	7.1HR PRO-121
85	Rear Roller Shaft	1	7.1HR PRO-85	122	Deck Frame Rubber Cushion	2	7.1HR PRO-122
86	Rear Roller	1	7.1HR PRO-86	123	Motor Belly Pan	1	7.1HR PRO-123
87	Front Shroud	1	7.1HR PRO-87	124	Driving DC Motor	1	7.1HR PRO-124
88	M5 x 20mm Allen Head Screw	2	7.1HR PRO-88	125	Motor Holder	1	7.1HR PRO-125
89	Round Cap	2	7.1HR PRO-89	126	M8 x 87mm Motor Holder Bolt	1	7.1HR PRO-126
90	Elevation Support Frame-#1	1	7.1HR PRO-90	127	30 x 8mm Washer	2	7.1HR PRO-127
91	Cir-Clip	2	7.1HR PRO-91	128	PU Cushion	1	7.1HR PRO-128
92	12 x 34.5mm Shaft	2	7.1HR PRO-92	129	M8 x 15mm Motor Fixing Bolt	2	7.1HR PRO-129
93	M14 x 53mm Bolt	2	7.1HR PRO-93	130	16 x 8mm Washer	2	7.1HR PRO-130
94	Copper Bushing-#1	4	7.1HR PRO-94	131	M10 Nylon Nut	1	7.1HR PRO-131
95	Elevation Support Frame-#2	2	7.1HR PRO-95	132	22 x 10mm Washer	1	7.1HR PRO-132
96	M14 x 62mm Bolt	2	7.1HR PRO-96	133	M10 x 188mm Bolt	1	7.1HR PRO-133
97	Plastic Cap	2	7.1HR PRO-97	134	Driving Belt	1	7.1HR PRO-134
98	Copper Bushing-#2	4	7.1HR PRO-98	135	Bracket Screw	1	7.1HR PRO-135
99	#6202 Bearing	2	7.1HR PRO-99	136	N/A	N/A	N/A
100	Transformer-Controller	1	7.1HR PRO-100	137	Plastic Fixing Insert	6	7.1HR PRO-137
101	Motor Control Board	1	7.1HR PRO-101	138	Wire Loom-Upper Section	1	7.1HR PRO-138
102	Elevation Control Board	1	7.1HR PRO-102	139	Safety Key Power Wire-Upper Section	1	7.1HR PRO-139
103	Motor Hood Fixing Bracket	2	7.1HR PRO-103	140	Power Fold Switch Wire-Upper Section	1	7.1HR PRO-140
104	N/A	N/A	N/A	141	Power Fold Switch Wire-Bottom Section	1	7.1HR PRO-141
105	M5 Nut	1	7.1HR PRO-105	142	Safety Key Power Wire-Bottom Section	1	7.1HR PRO-142

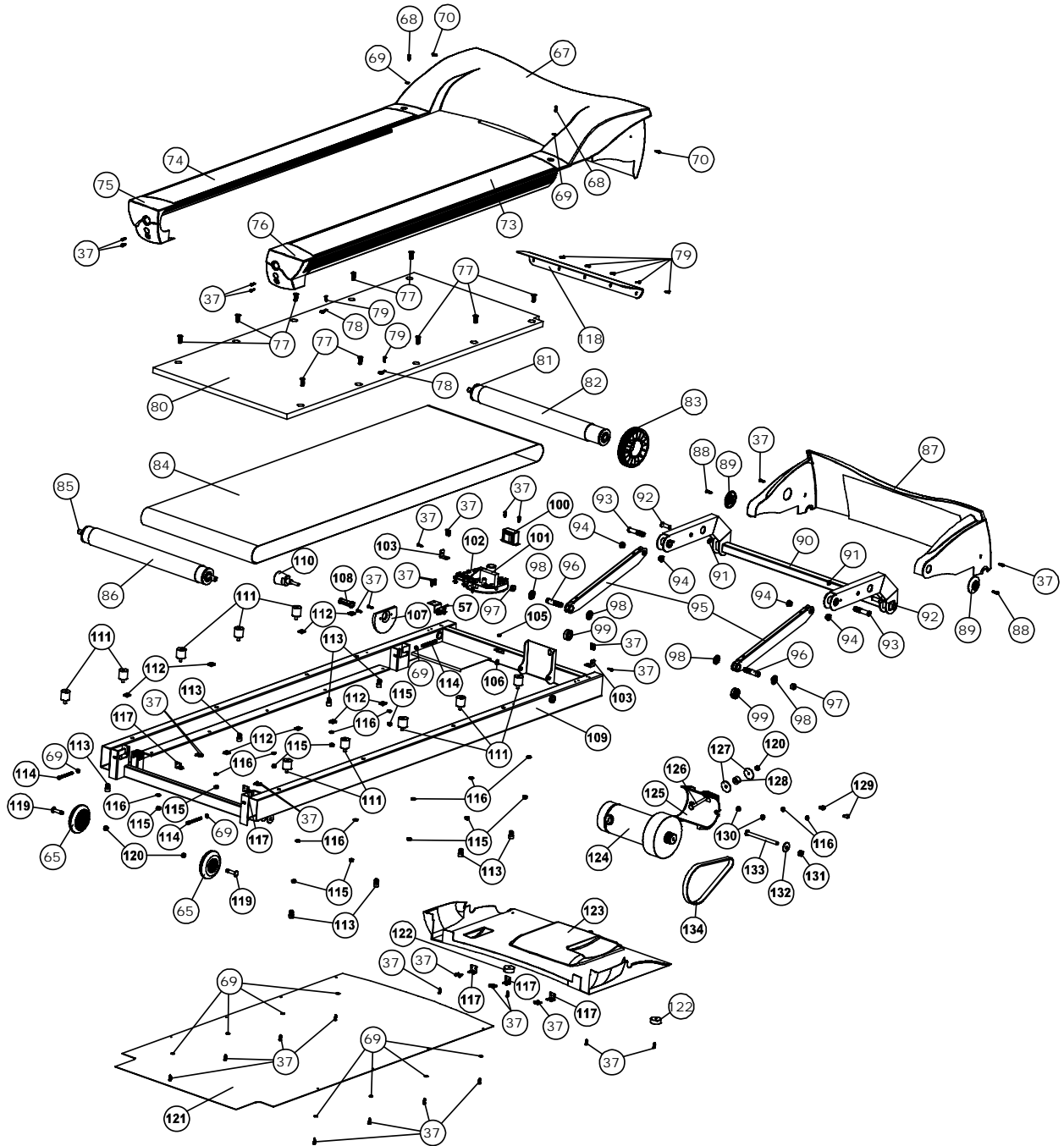
SMOOTH 7.1HR PRO POWER FOLDING TREADMILL

PARTS LIST

NO.	DESCRIPTION	QTY.	ORDER NO.	NO.	DESCRIPTION	QTY.	ORDER NO.
143	Wire Loom-Upper Section	1	7.1HR PRO-143	149	N/A	N/A	N/A
144	Power Switch	1	7.1HR PRO-144	150	N/A	N/A	N/A
145	Non-Fuse Break Switch	1	7.1HR PRO-145	151	N/A	N/A	N/A
146	Power Socket	1	7.1HR PRO-146	152	N/A	N/A	N/A
147	Water Bottle	1	7.1HR PRO-147	153	EKG Pulse Sensor Wire	2	7.1HR PRO-153
148	Heart Rate Transmitter Belt	1	7.1HR PRO-148	154	EKG Pulse Sensor Wire – Upper Section	2	7.1HR PRO-153

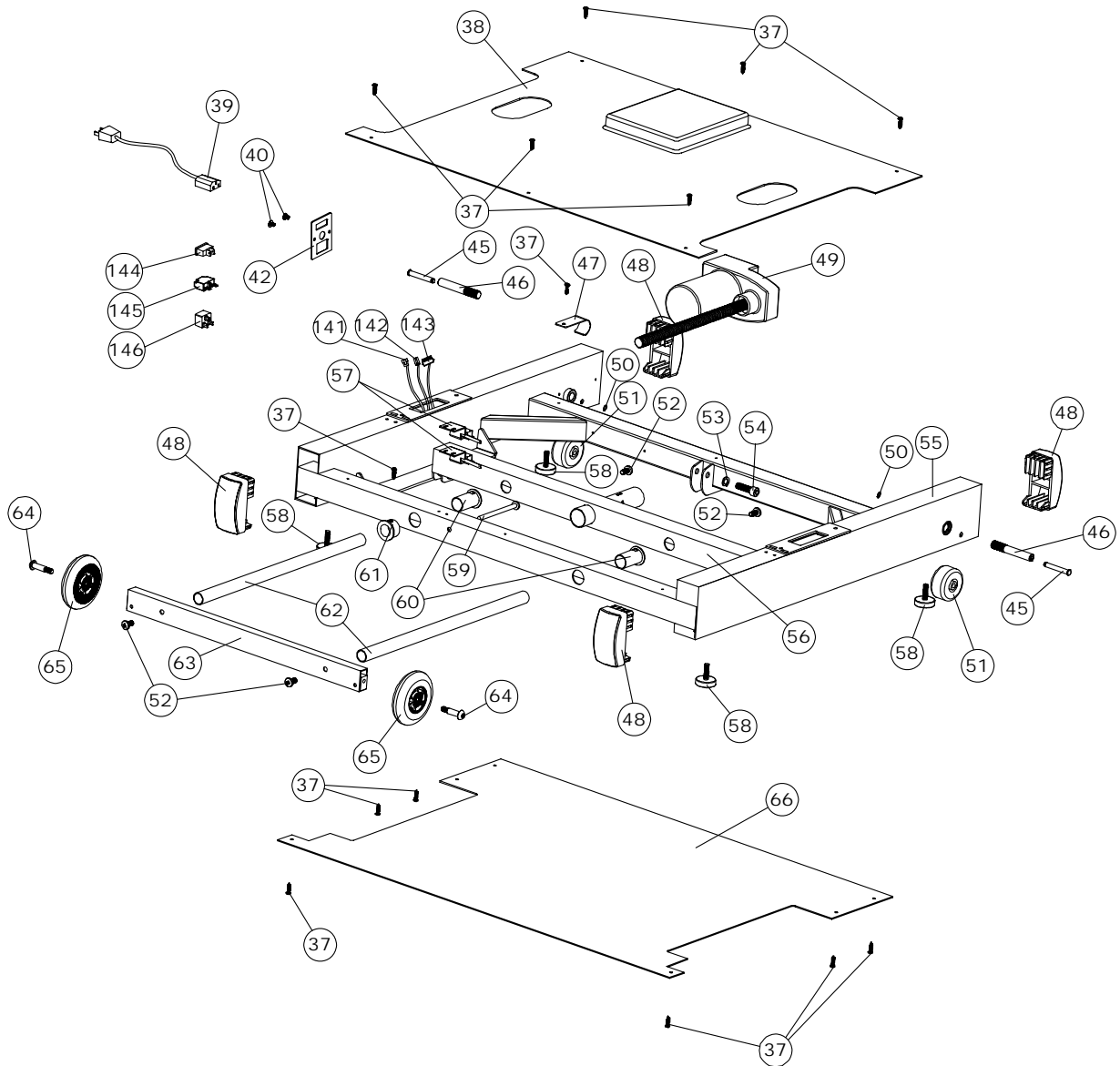
PARTS DIAGRAM

A MAJORITY OF THE PARTS SHOWN HERE HAVE BEEN PREASSEMBLED AT THE FACTORY.



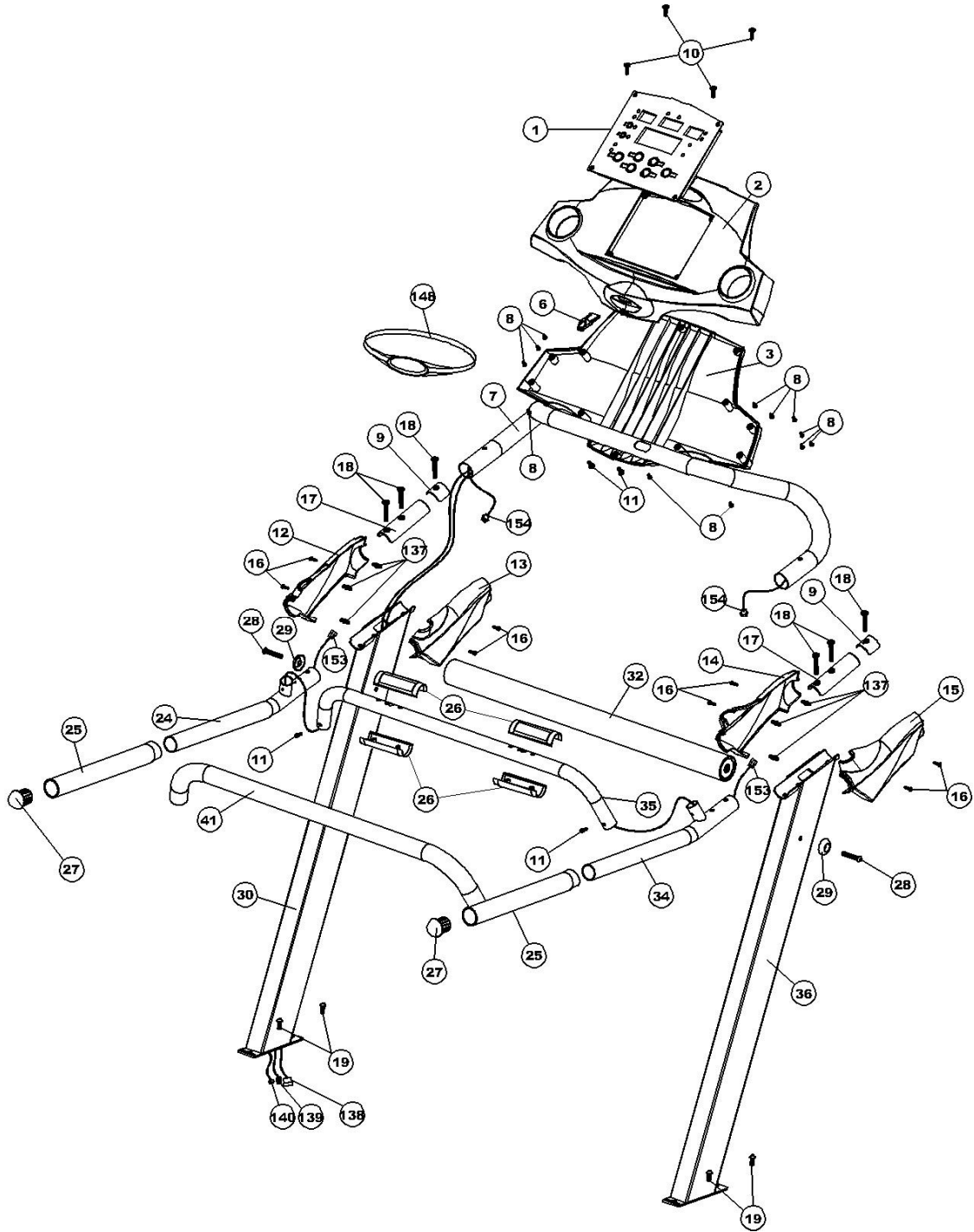
PARTS DIAGRAM

A MAJORITY OF THE PARTS SHOWN HERE HAVE BEEN PREASSEMBLED AT THE FACTORY.



PARTS DIAGRAM

A MAJORITY OF THE PARTS SHOWN HERE HAVE BEEN PREASSEMBLED AT THE FACTORY.

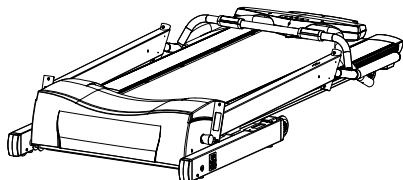
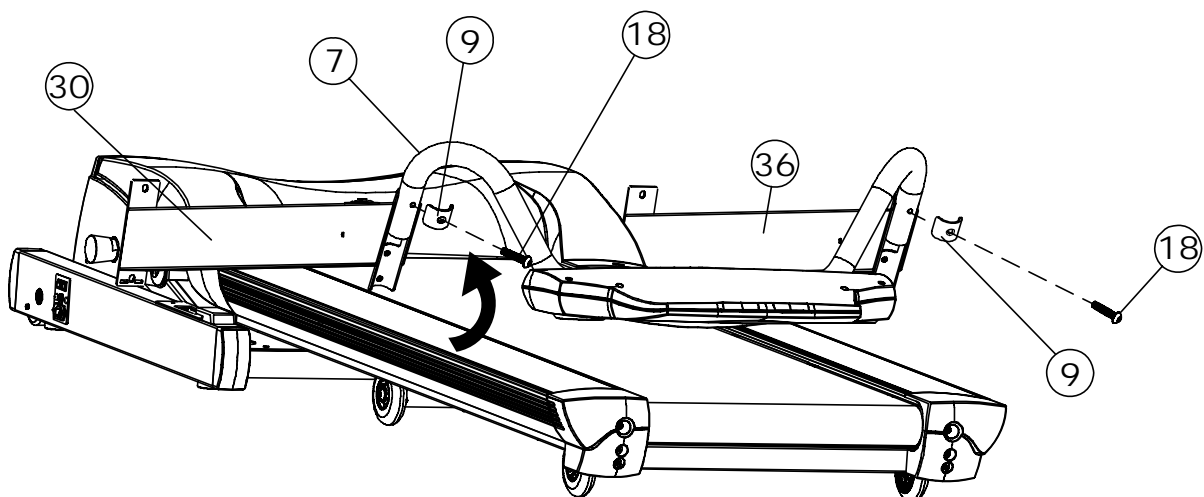
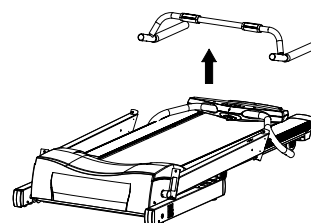


ASSEMBLY**STEP 1:**

Remove your treadmill from the carton and place it on the floor in an open area as shown in FIG 1.

Then remove the Handlebars and place them out of the way for now, as shown in FIG2.

Attach the Console Support Tube (7) to Upright – Left (30) and Upright – Right (36) with Console Support Tube Fixing Plate (9) and M8 x 25mm Allen Head Bolt (18).

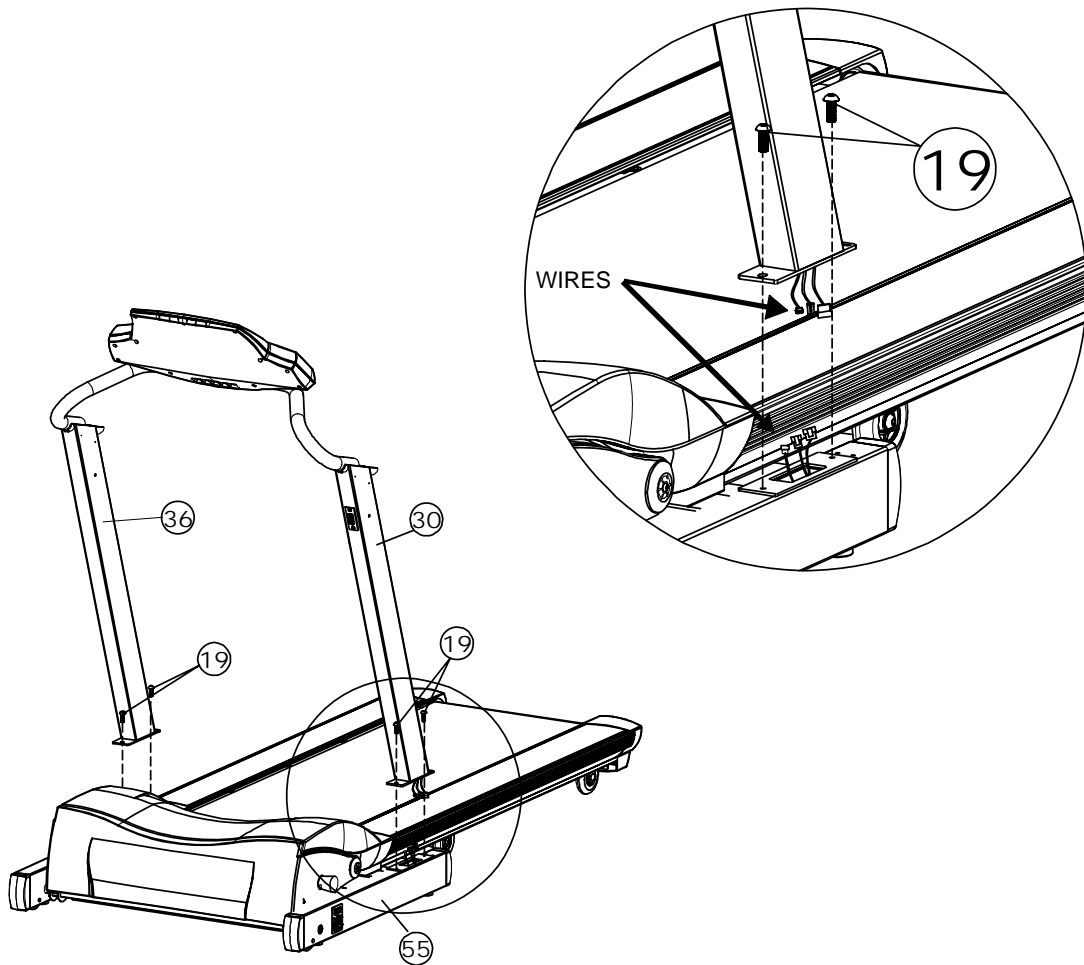
FIG.1**FIG.2**

ASSEMBLY**STEP 2:**

NOTE: YOU WILL NEED THE HELP OF ANOTHER PERSON IN ORDER TO COMPLETE STEP 2 OF THE ASSEMBLY PROCEDURE.

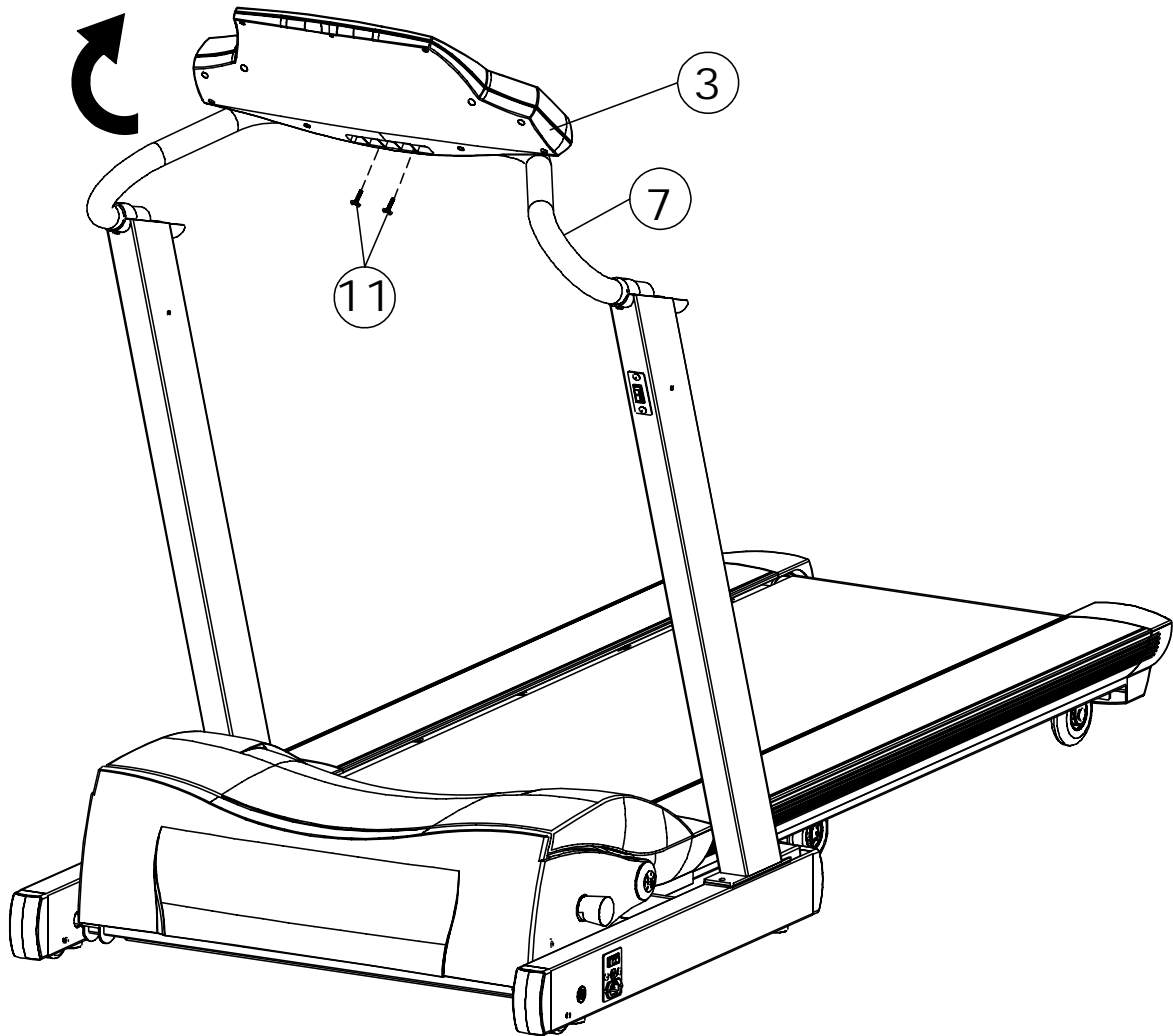
First make sure to connect the wires. Then, simply have one person hold the Uprights (30 and 36) in place on the Base Frame (55) while the other secures it with four M8 x 15mm Allen Head Screw (19).

Do not fully tighten the M8 x 15mm Allen Head Screw (19) at this time.



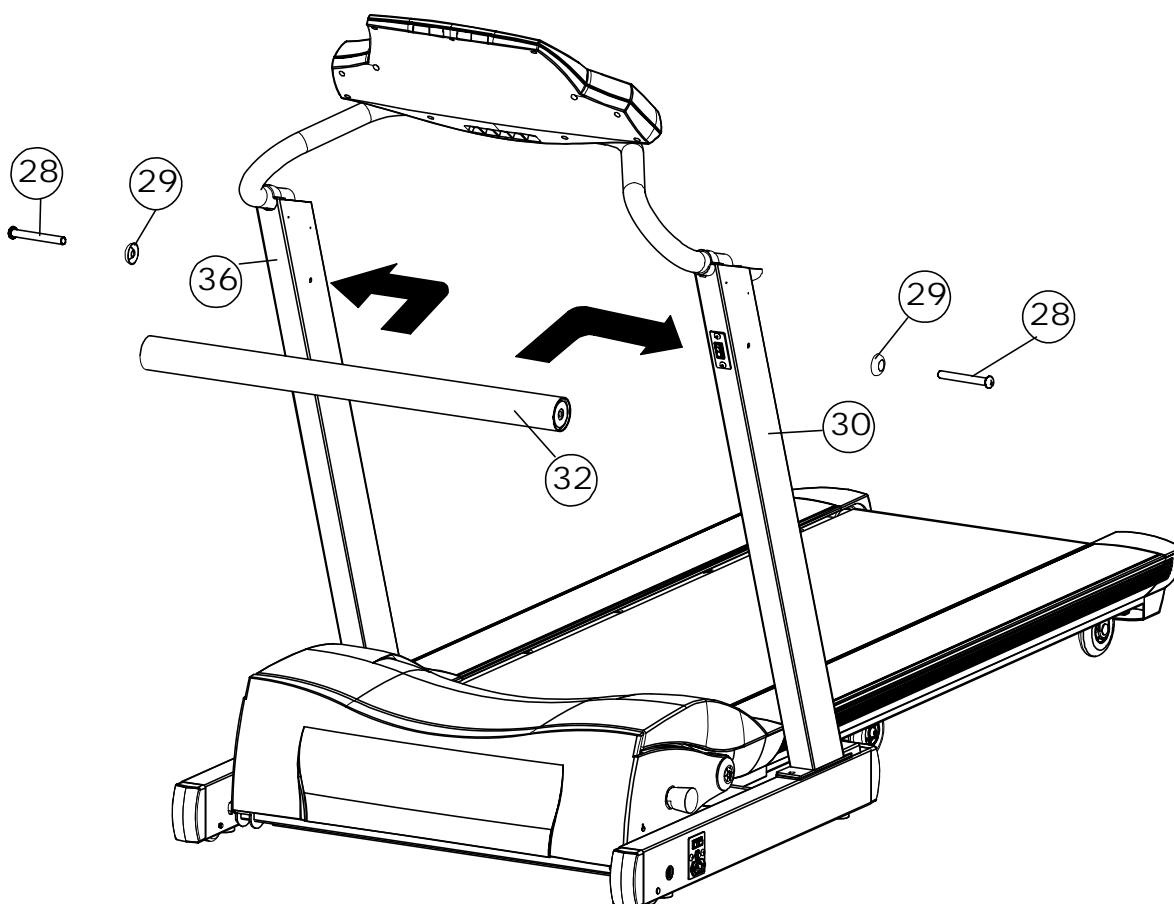
ASSEMBLY**STEP 3:**

Rotate the Console Housing (3) to position as shown and secure with two M6 x 15 Screws (11).



ASSEMBLY**STEP 4:**

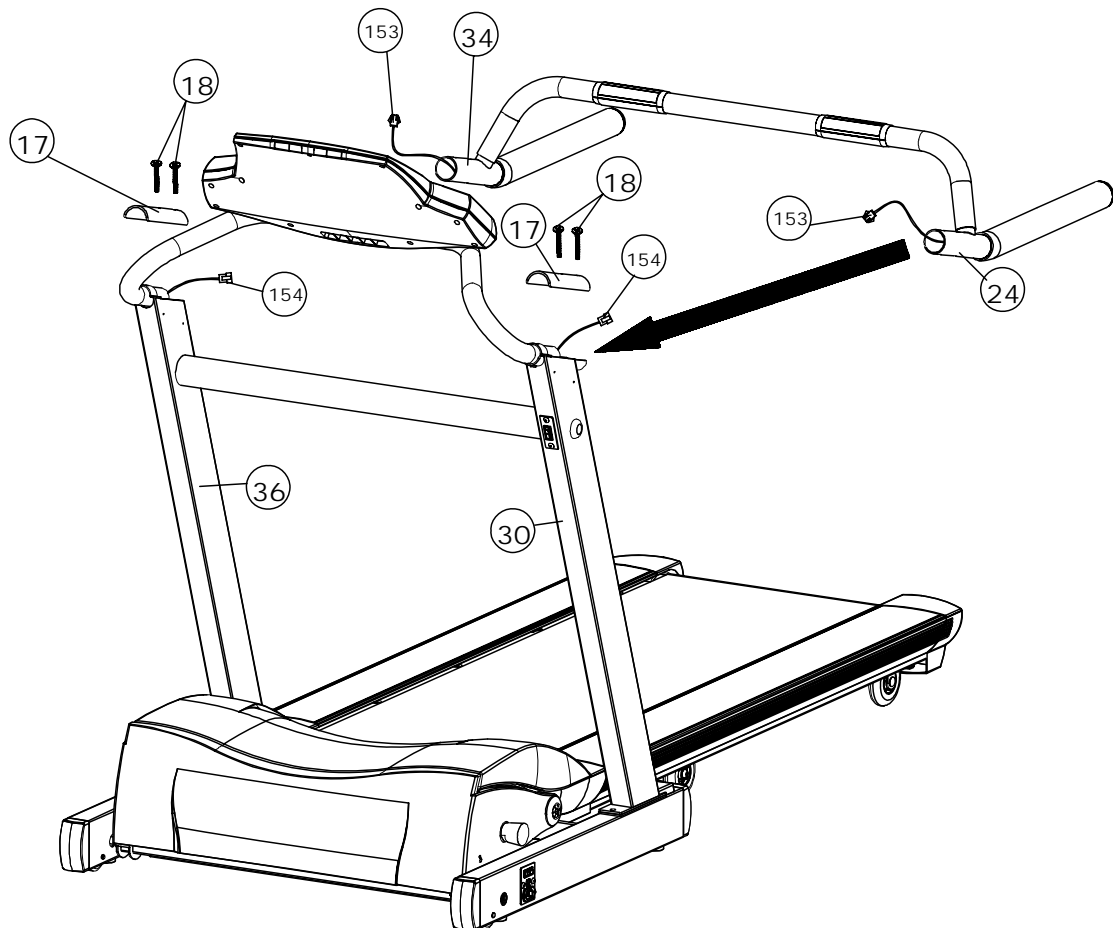
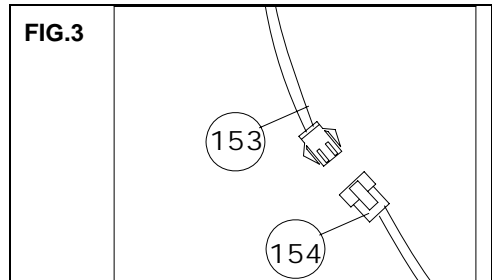
Attach the Upright Cross Brace (32) to the Left and Right Uprights (30 and 36) and secure with Metal Caps (29) and Upright Cross Brace Bolts (28). Do Not fully tighten Bolts (28) at this point but do fully tighten Screws (19) after you've assembled the cross brace (32).



ASSEMBLY**STEP 5:**

Connect the Sensor Wires, as shown in FIG3. Attach the Handlebar-Right (34) and Handlebar-Left (24) to the Right and Left Uprights (36 and 30) and secure with Handlebar Fixing Plates (17) and M8 x 25 Allen Head Bolts (18). Then you can fully tighten the Upright Cross Brace Bolts (28) now.

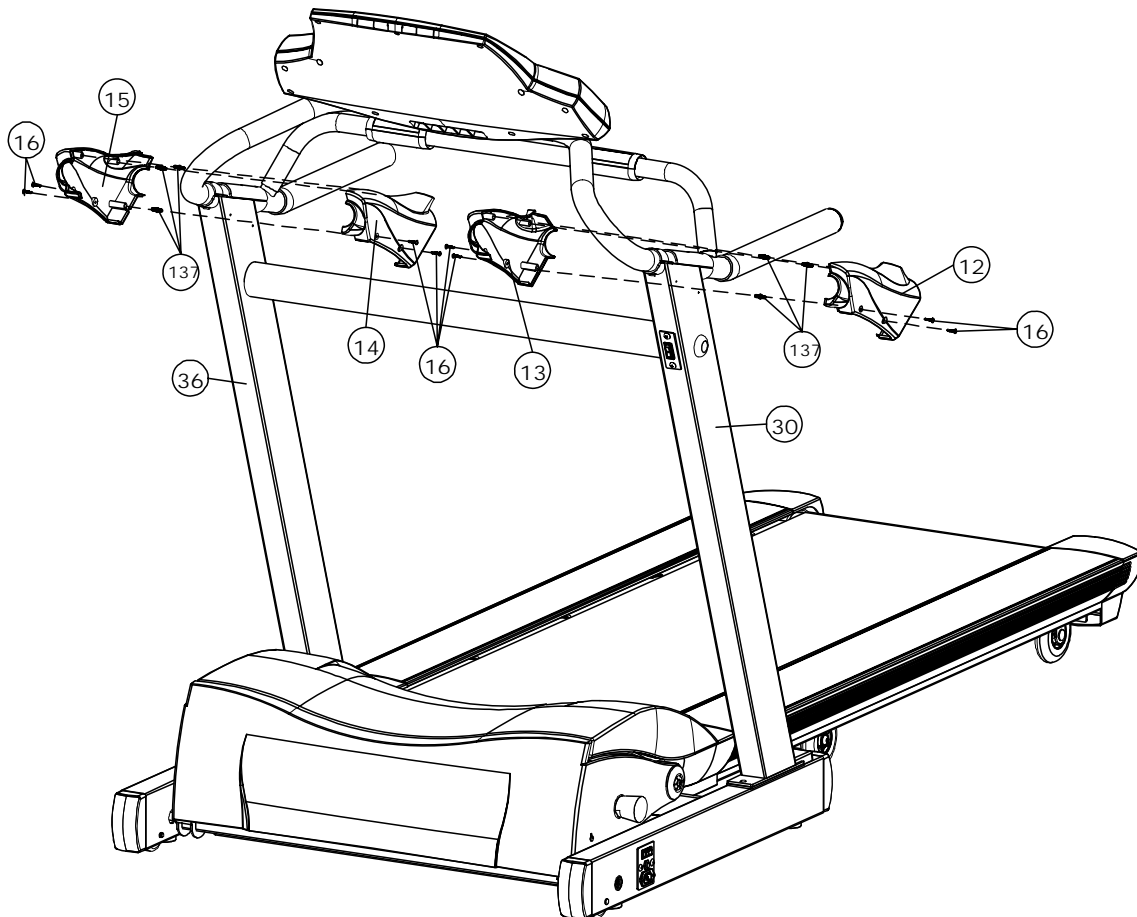
NOTE: Please make sure not to pinch the Sensor Wires when attaching the Handlebars.



ASSEMBLY**STEP 6:**

Attach the Handlebar Cover-Right #1 (15) and Handlebar Cover-Right #2 (14) to the Upright-Right (36) and secure with #8 x 25 Handlebar Cover Screws (16) and Plastic Fixing Inserts (137). Repeat the procedure on the Upright-Left (30) with Handlebar Cover-Left #1 (12), Handlebar Cover-Left #2 (13) and #8 x 25 Handlebar Cover Screws (16) and Plastic Fixing Inserts (137).

Your treadmill is now fully assembled.



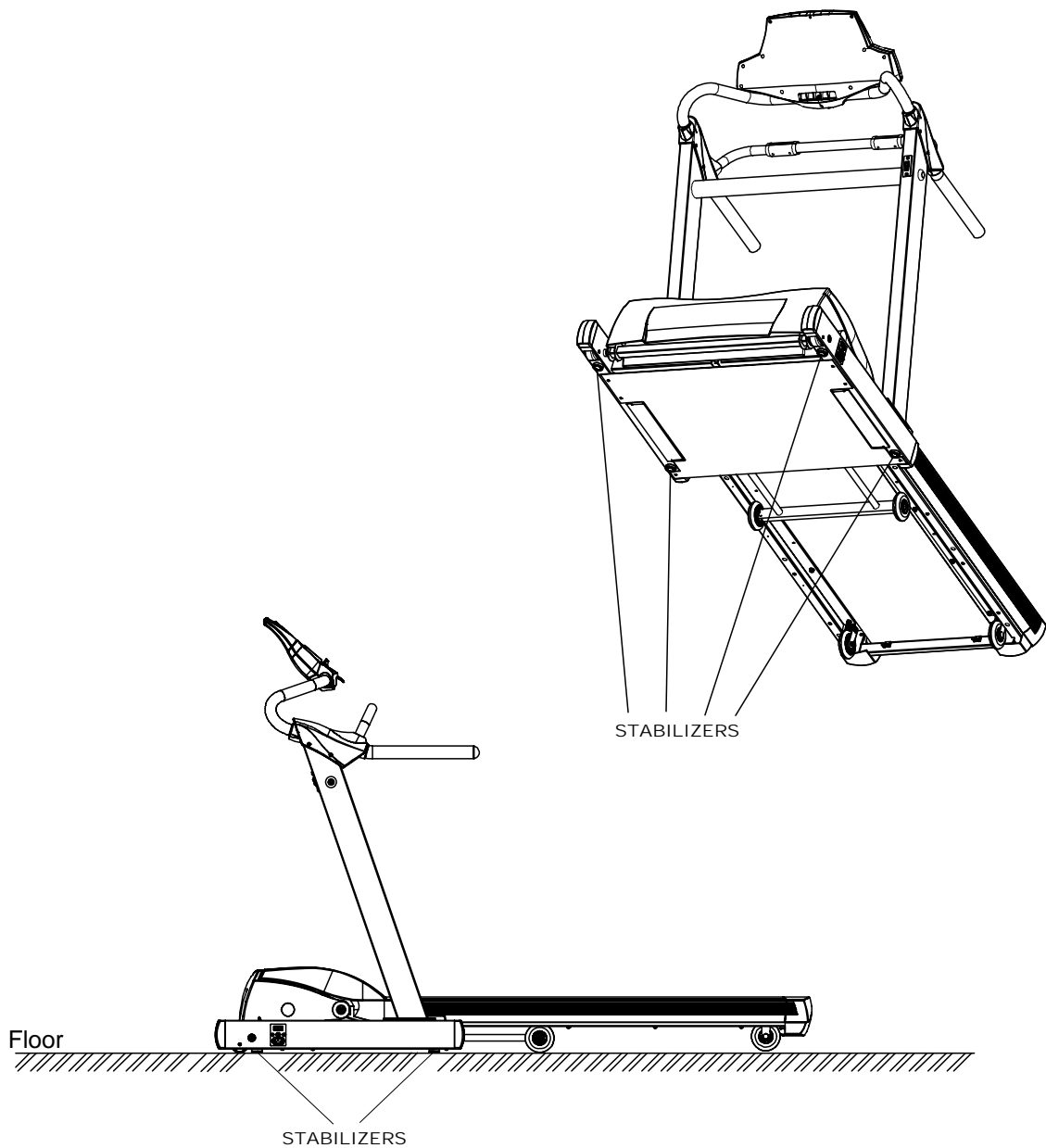
LEVEL ADJUSTMENT

How to level the treadmill:

Uneven flooring could cause the Spring loaded Knob not to engage and thus prevent the treadmill from folding or being able to incline.

To adjust the level you will need the help of another person, as you will need to tip the treadmill on its side.

Tip the treadmill to the left/right. You will see the stabilizers. These will need to be screwed either in or out to level the treadmill. Repeat for the other side. It may help to use a spirit level when adjusting the level on your treadmill.



FOLDING INSTRUCTIONS

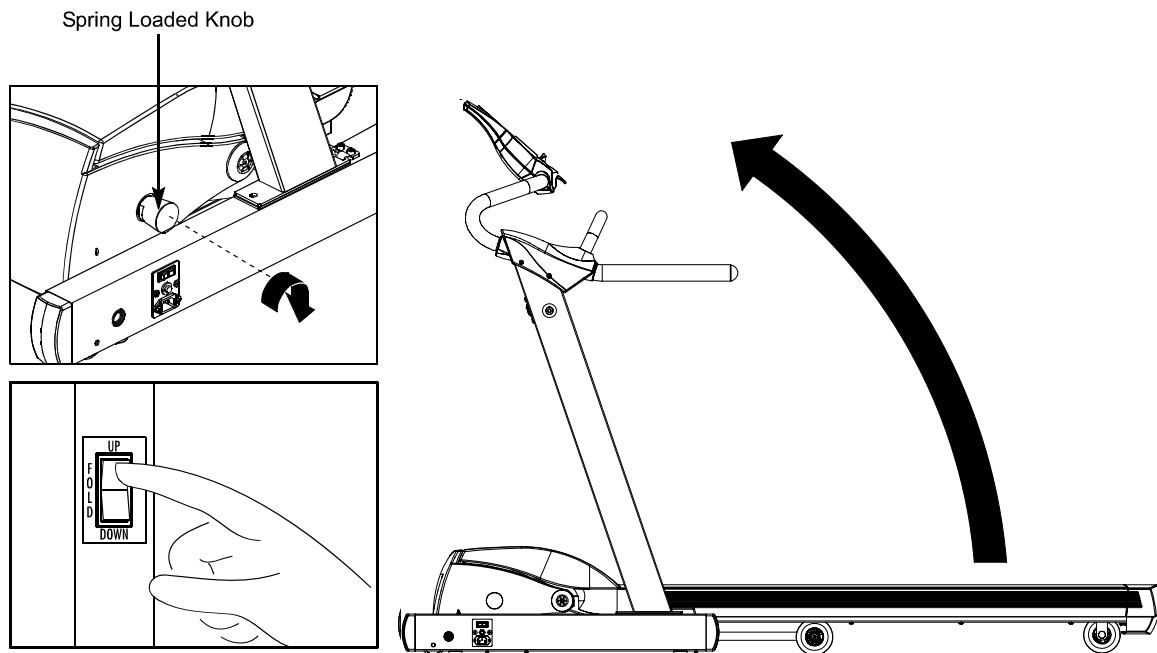
How to fold up the treadmill:

In order for the power fold system to work you need to plug your 7.1HR PRO in and insert the safety key.

The 7.1HR PRO treadmill has a unique Easy-Up power fold system. Before folding the TR3 press the "reset" button on the console. This will ensure that the 7.1HR PRO is in its lowest position and the 7.1HR PRO will fold. The 7.1HR PRO won't fold unless it's in this position.

Follow these instructions to power fold your 7.1HR PRO:

1. Press STOP button twice to reset the console and wait until the belt has fully stopped. The deck will de-elevate to Level 1 while console be reset.
2. Turn the Spring Loaded Knob clockwise until it's fully engaged. A click can be felt at this point.
3. Push the Power Fold Switch located on the front of the Left Upright and the deck will now start to fold. Keep holding this switch until the deck has fully folded.
4. Turn off the power and unplug the treadmill before you leave it. Do not leave the treadmill unattended and plugged in at any time.



UNFOLDING INSTRUCTIONS

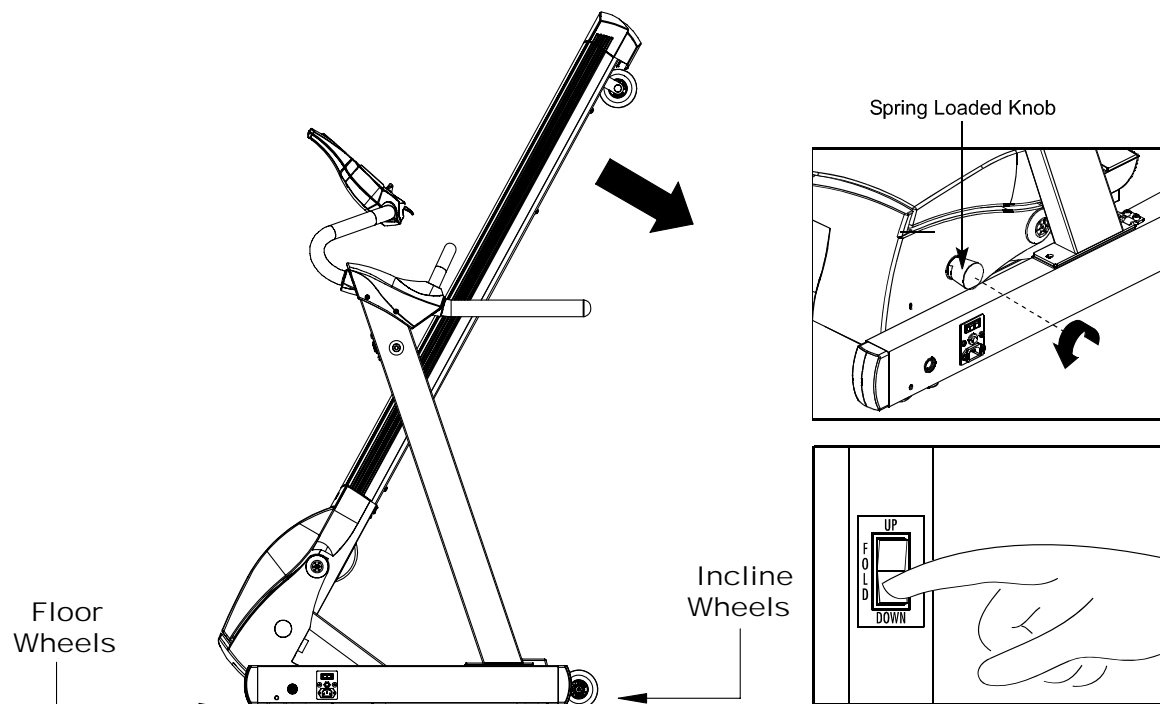
IMPORTANT

Before unfolding the 7.1HR PRO plug the treadmill in and insert the safety key.

Follow these instructions to un-fold your 7.1HR PRO.

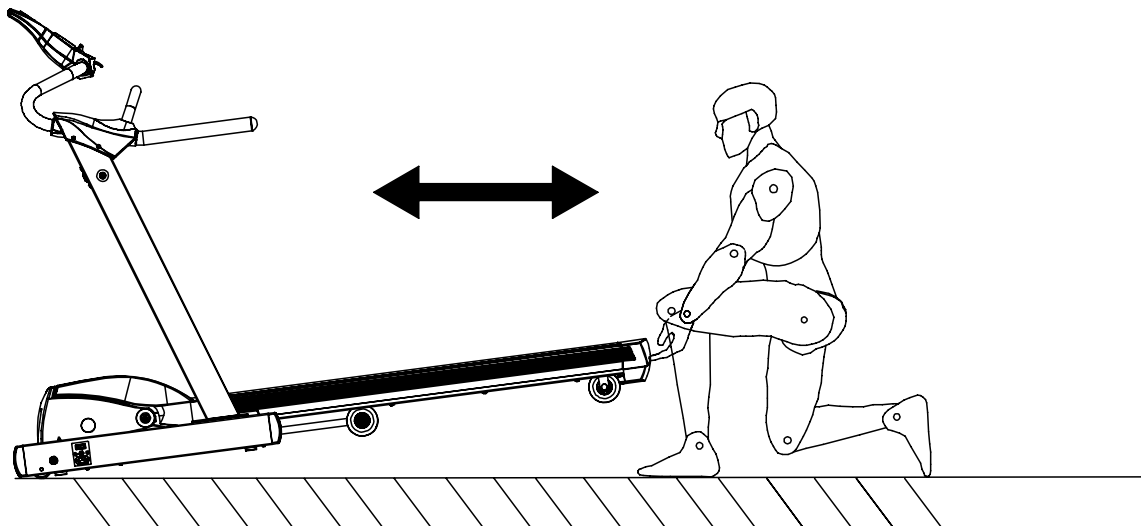
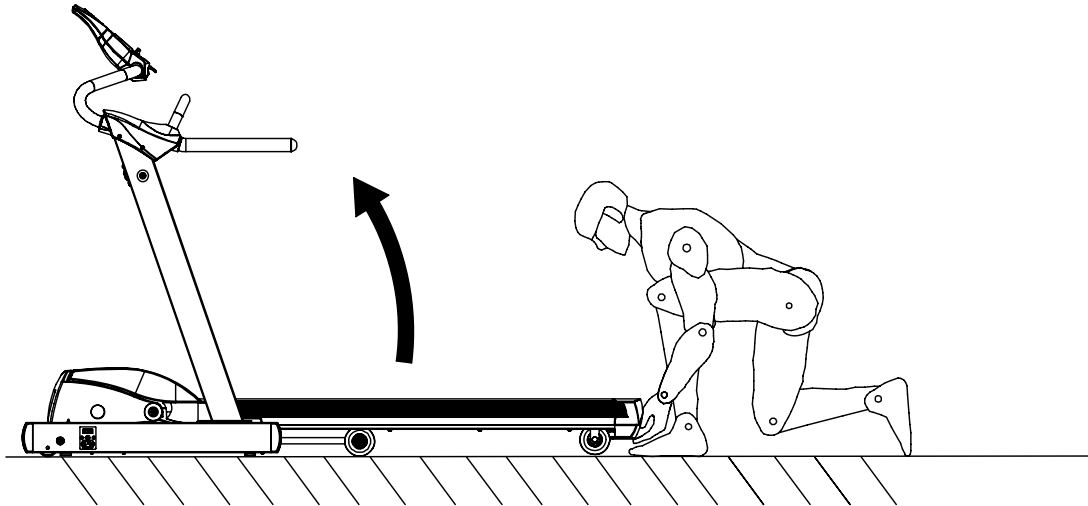
1. Push the Power Fold Switch "down". The 7.1HR PRO will now start to descend. Keep holding the switch until the deck has fully descended.
2. Turn the Spring Loaded Knob counter clockwise until it disengages. If you do not do this the 7.1HR PRO will not elevate/incline while being used.

IMPORTANT: Never tilt your treadmill using the incline wheels when repositioning or moving your treadmill. Only roll/push the treadmill on the floor wheels.



TRANSPORT INSTRUCTIONS**MOVING YOUR TREADMILL:**

There are **TRANSPORT WHEELS** located under the front of the base frame of your Smooth 7.1HR PRO treadmill. The easiest way to move the treadmill is to lift the deck up from the rear until the **TRANSPORT WHEELS** touch the floor. Then simply wheel the treadmill to a desired location and set the deck back on the floor.



MAINTENANCE

HOW TO MAINTAIN YOUR TREADMILL:

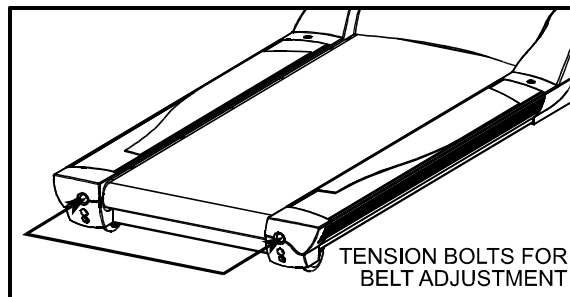
Proper maintenance is very important to ensure your treadmill is always in top working condition. Improper maintenance could cause damage or shorten the life of your treadmill.

- **Important:** Never use abrasives or solvents to clean the treadmill. To prevent damage to the computer, keep liquids away and keep it out of direct sunlight.
- Inspect and tighten all parts of the treadmill regularly. Replace any worn parts immediately.

BELT ADJUSTMENT:

The running belt has been properly adjusted at the factory. However transportation, uneven flooring or other unpredicted reasons could cause the belt to shift off center resulting in the belt rubbing with the plastic side rail or end caps and possibly causing damage. To adjust the belt back to it's proper position please follow the directions below:

1. If your belt tends to walk to the right, rotate the right tension bolt clockwise. We recommend adjustments of 1/4 turn at a time, and follow with a test. If your belt continues to walk to the right, simply adjust the left belt tension bolt by turning it 1/4 turn counterclockwise, and follow with a test.
2. If your belt tends to walk to the left, rotate the left tension bolt clockwise 1/4 turn at a time, and follow with a test. If the belt continues to walk to the left, simply adjust the right tension bolt counterclockwise.
3. If your belt appears to be loose, simply tighten both bolts evenly 1/4 turn. If it appears tight, simply loosen both bolts evenly 1/4 turn.



Right and left tension bolts are located at the rear of the treadmill.

DECK LUBRICATION:

The walking belt has been pre-lubricated at the factory. However, it is recommended that the walking board be checked periodically for lubrication to ensure optimal treadmill performance. Your treadmill should not have to be lubricated usually within the first year or 500 hours of use.

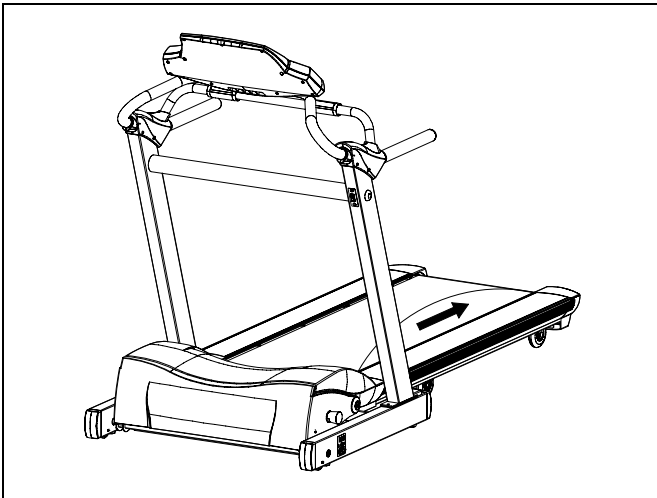
Every 3 month of operation lift the sides of the walking belt and feel the top surface of the walking board as far as you can reach. If you feel signs of silicone, no further lubrication is required. If it feels dry to the touch, follow the instructions below.

Please use a non-petroleum based silicone.

MAINTENANCE

To apply lubricant to the walking belt:

1. Position the walking belt so that the seam is located on top and in center of the walking board.
2. Insert the spray nozzle into the spray head of the lubricant can.
3. While lifting the side of the walking belt, position the spray nozzle between the walking belt and the board approximately 15 cm (6 inches) from the front of the treadmill. Apply the silicone spray to the walking board, moving from the front of the treadmill to the rear. Repeat this on the other side of the belt. Spray approximately 4 seconds on each side.
4. Allow the silicone to "set" for 1 minute before using the treadmill.



Spray lubricant from front to back.

CLEANING:

Routine cleaning of your treadmill will extend the product's life.

- **Warning:** To prevent electrical shock, be sure the power to the treadmill is OFF and the power cord is unplugged from the wall electrical outlet before attempting any cleaning or maintenance.
- **Important:** Never use abrasives or solvents to clean the treadmill. To prevent damage to the computer, keep liquids away and keep it out of direct sunlight.
- **After each workout:** Wipe off the console and other treadmill surfaces with a clean, water dampened soft cloth to remove excess perspiration.
- **Weekly:** Use of a treadmill mat is recommended for ease of cleaning. Dirt from your shoes contacts the belt and eventually makes it to underneath the treadmill. Vacuum underneath treadmill once a week.

WARRANTY

Warranty Coverage: Smooth Fitness, Inc. ("Smooth Fitness") warrants to the original purchaser that each new product to be free from defects in workmanship and material, under normal use and conditions.

Period of Coverage: The Warranty on this product runs from the date of your purchase for a period of LIFETIME on the frame, TEN (10) years on the motor, FIVE (5) years on the belt, deck and rollers, THREE (3) years on the electronics and ONE (1) year on labor. Smooth Fitness reserves the right to inspect damaged parts for misuse.

It is recommended that the Original Receipt be kept with the product manual.

Remedy Provided by Smooth Fitness: Smooth Fitness will provide a replacement part free of charge if a defect is found during the Warranty period. You must pay any charges for shipping and handling outside of the Continental United States and for labor. To obtain service call your local Smooth Retailer.

Any redemption may be by repair or replacement of the affected parts and/or product at the sole discretion of Smooth Fitness, by personnel approved by Smooth Fitness. If repairs are required, the unit will be repaired at the location of use or by return to the factory as deemed appropriate by Smooth Fitness.

Parts repaired or replaced pursuant to this Warranty shall be warranted for the unexpired portion of the Warranty applying to the original product. Any technical advice furnished before or after delivery in regard to the use or application of Smooth Fitness products is furnished without charge and on the basis that it represents Smooth Fitness' best judgment under the circumstances but that the advice is used at your sole risk.

Procedure for Obtaining Your Remedy Under This Warranty: For service call your local EVO dealer or contact us directly at 888-800-1167. To help them assist you, please have the following information ready:

- Model name or number from the cover of the manual;
- Serial number located on the frame of the unit; and
- The part description and the order number.

Limitations on Warranty: This Warranty will only apply to the original end user. This Warranty does not cover any problems, damages or failures that are caused by accident, improper assembly, failure to observe cautionary labels on the product, failure to operate the product correctly, abuse or freight damage. Smooth Fitness does not warrant against any damage or defects that may result from repair or alterations made to the product by an unauthorized repair facility.

This Warranty shall terminate if you sell or otherwise transfer this product. This Warranty does not apply to any product shipped or handled outside of the United States or Canada. This Warranty does not apply if the product is used for rental or commercial use. Consequential and incidental damages are not recoverable under this Warranty. (Some states do not allow the exclusion or limitation of incidental or consequential damages, so the above limitation or exclusion may not apply to you.)

THIS WARRANTY IS EXPRESSLY IN LIEU OF ALL OTHER EXPRESS WARRANTIES. ALL IMPLIED WARRANTIES, INCLUDING WARRANTIES OF MERCHANTABILITY OR FITNESS FOR ANY PARTICULAR PURPOSE, ARE LIMITED IN DURATION TO ONE (1) YEAR FROM THE EFFECTIVE DATE OF THIS WARRANTY. SMOOTH FITNESS IS NOT LIABLE FOR CONSEQUENTIAL OR INCIDENTAL DAMAGES RESULTING FROM ANY DEFECT IN PARTS NOR FOR ANY BREACH OF EXPRESS OR IMPLIED WARRANTIES. SMOOTH FITNESS' SOLE LIABILITY UNDER THIS WARRANTY IS LIMITED TO THE TERMS DESCRIBED IN THIS FORM. THIS WARRANTY GIVES YOU SPECIFIC LEGAL RIGHTS, AND YOU MAY ALSO HAVE OTHER RIGHTS WHICH VARY FROM STATE TO STATE.

For assistance with assembly or to order replacement parts, simply call your local EVO dealer or contact us directly at 888-800-1167. To help them assist you, please have the following information ready:

- Model name or number from the cover of the manual;
- Serial number located on the frame of the unit; and

The part description and order number.

IMPORTANT STEPS

Warning:

Before using this product, please consult your personal physician for a complete physical examination. Frequent and strenuous exercise should be approved by your doctor first. If any discomfort should result from your use of this product, stop exercising and consult your doctor. Proper usage of this product is essential. Please read your manual carefully before exercising.

Please keep all children away from the equipment during use and when equipment is unattended.

Always wear appropriate clothing, including athletic shoes, when exercising. Do not wear loose clothing that could become caught during exercising.

Make sure that all bolts and nuts are tightened when equipment is in use. Periodic maintenance is required on all exercise equipment to keep it in good condition.

Before beginning:

How you begin your exercise program depends on your physical condition. If you have been inactive for several years, or are severely overweight, you must start slowly and increase your time gradually, a few minutes per week.

Initially you may be able to exercise only for a few minutes in your target heart rate zone. However, your aerobic fitness will improve over the next six to eight weeks. Don't be discouraged if it takes longer. It's important to work at your own pace. Ultimately, you'll be able to exercise continuously for 30 minutes. And the better your aerobic fitness, the harder you will have to work to stay in your target heart rate zone. But remember these essentials:

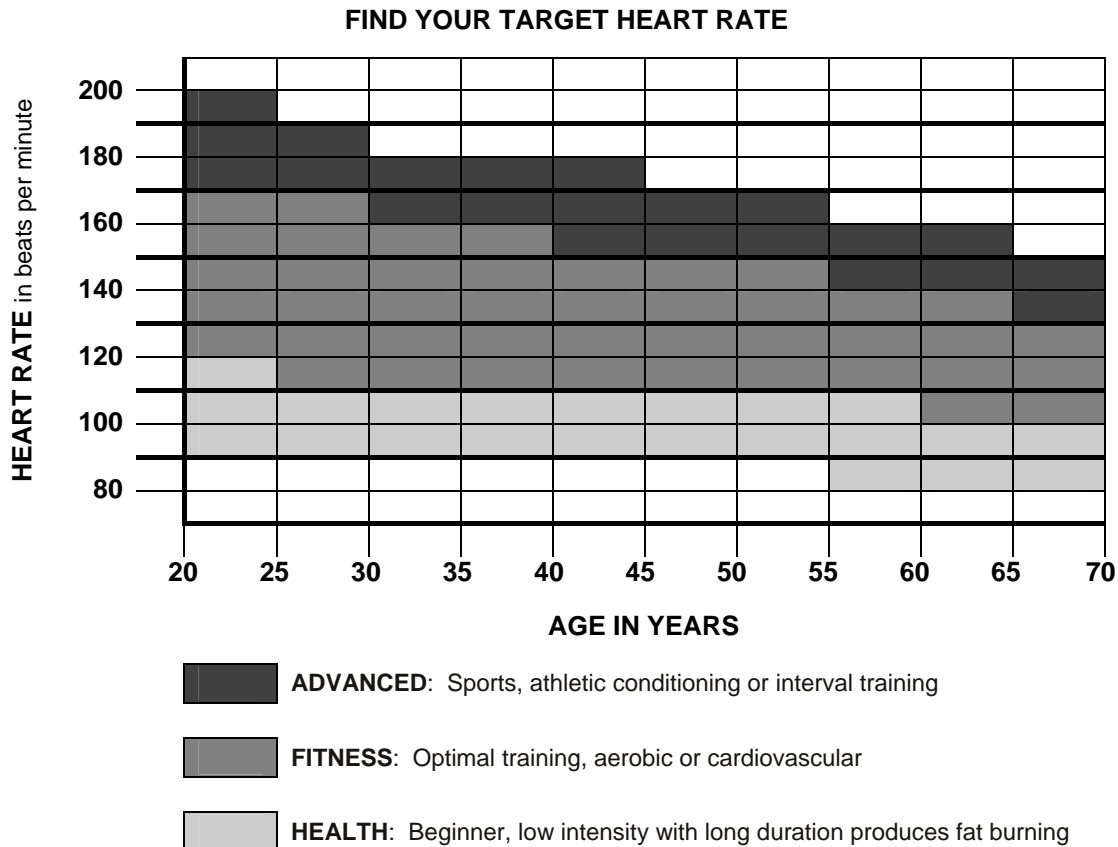
- Contact your physician before starting a workout or training program. Have your doctor review your training and diet programs to advise you of a workout routine you should adopt.
- Begin your training program slowly with realistic goals that have been set by you and your doctor.
- Supplement your program with some type of aerobic exercise such as walking, jogging, swimming, dancing and/or bicycling. Monitor your pulse frequently. If you do not have an electronic heart rate monitor, have your physician show you the proper way to manually check your pulse by using your wrist or neck. Establish your target heart rate based on your age and condition.
- Drink plenty of fluids during the course of your routine. You must replace the water content lost from excessive exercising to avoid dehydration. Avoid drinking large amounts of cold liquids. Fluids should be at room temperature when consumed.

TARGET HEART RATE

Finding your pulse:

To make sure your heart is beating in its target zone, you'll need to know how to monitor your heart rate. The easiest way is to feel the pulse in the carotid artery on either side of your neck, between the windpipe and the large neck muscles. Count the number of beats in ten seconds, and then multiply that number by six. This gives you the number of beats per minute.

How fast should your heart beat during aerobic exercise? Fast enough to reach and stay in its "target zone," a range of beats per minute that is largely determined by your age and physical condition. To determine your target zone, consult the chart we have provided.

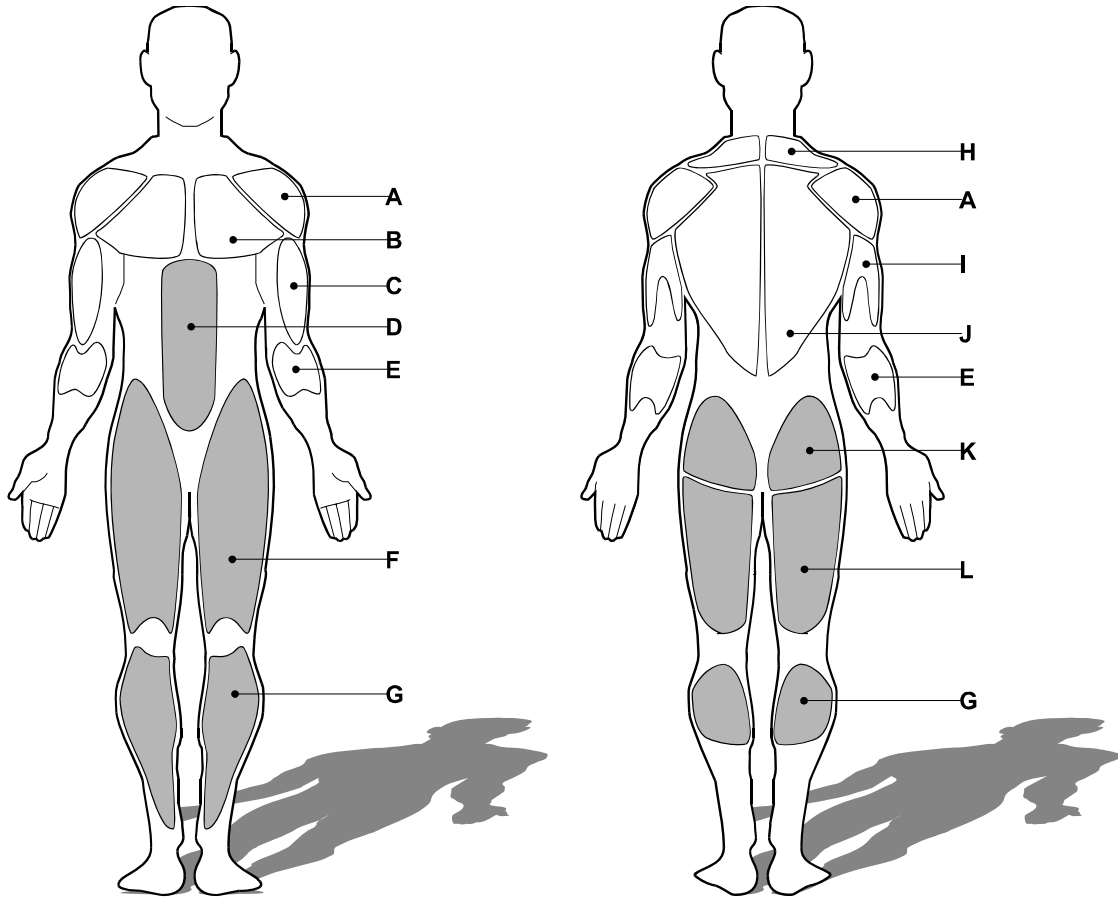


Aerobic exercise:

Is any sustained activity that sends oxygen to your muscles via your heart and lungs. It will improve the fitness of your lungs and heart: your body's most important muscle. Aerobic fitness is promoted by any activity that uses your large muscle groups - arms, legs or buttocks, for example. Your heart beats quickly and you breathe deeply. An aerobic exercise should be part of your entire exercise routine.

MUSCLE CHART**Targeted muscle groups:**

The exercise routine that is performed on this product will develop primarily lower body muscle groups. These muscle groups are shown in gray color on the chart below.



Shoulder muscles	<input type="checkbox"/> A	<input type="checkbox"/> B	Pectoral muscles
Bicep muscle	<input type="checkbox"/> C	<input type="checkbox"/> D	Abdominal muscles
Forearm muscles	<input type="checkbox"/> E	<input type="checkbox"/> F	Quadricep muscles
Calf muscles	<input type="checkbox"/> G	<input type="checkbox"/> H	Trapezius muscles
Tricep muscles	<input type="checkbox"/> I	<input type="checkbox"/> J	Back muscles
Gluteal muscles	<input type="checkbox"/> K	<input type="checkbox"/> L	Hamstring muscles

STRETCHING ROUTINE

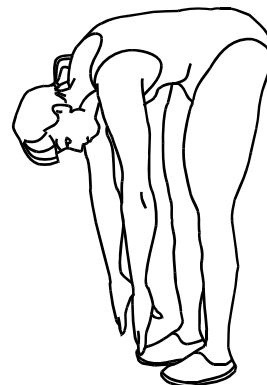
Warm up and cool down:

A successful exercise program consists of a warm-up, aerobic exercise, and a cool-down. Do the entire program at least two or three times a week, resting for a day between workouts. After several months, you can increase your workouts to four or five times per week.

Warming up is an important part of your workout, and should begin every session. It prepares your body for more strenuous exercise by heating up and stretching out your muscles, increasing your circulation and pulse rate, and delivering more oxygen to your muscles. At the end of your workout, repeat these exercises to reduce sore muscle problems. We suggest the warm-up and cool-down exercises on the following pages:

Toe Touch:

Slowly bend forward from your waist, letting your back and shoulders relax as you stretch toward your toes. Reach down as far as you can and hold for 15 counts.



Shoulder Lift:

Lift your right shoulder up toward your ear for one count. Then lift your left shoulder up for one count as you lower your right shoulder.



Head Roll:

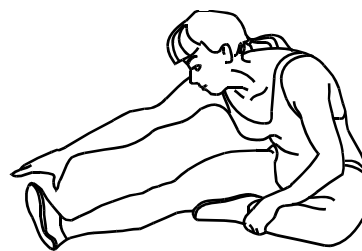
Rotate your head to the right for one count, feeling the stretch up the left side of your neck. Next, rotate your head back for one count, stretching your chin to the ceiling and letting your mouth open. Rotate your head to the left for one count, and finally, drop your head to your chest for one count.



STRETCHING ROUTINE

Hamstring Stretch:

Sit with your right leg extended. Rest the sole of your left foot against your right inner thigh. Stretch toward your toe as far as possible. Hold for 15 counts. Relax and then repeat with left leg extended.



Inner Thigh Stretch:

Sit with the soles of your feet together with your knees pointing outward. Pull your feet as close into your groin as possible. Gently push your knees towards the floor. Hold for 15 counts.



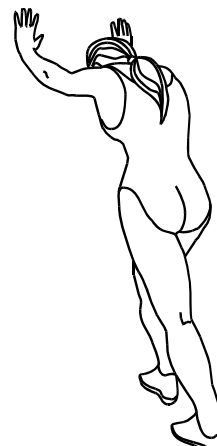
Side Stretch:

Open your arms to the side and continue lifting them until they are over your head. Reach your right arm as far upward toward the ceiling as you can for one count. Feel the stretch up your right side. Repeat this action with your left arm.



Calf-Achilles Stretch:

Lean against a wall with your left leg in front of the right and your arms forward. Keep your right leg straight and the left foot on the floor; then bend the left leg and lean forward by moving your hips toward the wall. Hold, and then repeat on the other side for 15 counts.



TROUBLESHOOTING

Troubleshooting

NOTE: Do not touch any internal electric wires without consulting the manufacturer.

Treadmill will not start:

1. Make sure the power cord is plugged into a surge protector, the surge protector is plugged into a properly grounded outlet and the surge protector is turned on (refer to the Power Requirements section in this manual).
2. Check the circuit breaker reset switch located on the front of the treadmill. Turn the power off, wait 5 minutes then press the rest switch.
3. Check the house electrical breaker box and the circuit breaker for the room the treadmill is located in. If it has tripped, reset or have an electrician replace the breaker in home.
4. Have an electrician check for inadequate voltage at the outlet.

Treadmill loses power during use:

1. Check the circuit breaker reset switch located on the front of the treadmill. Turn the power off, wait 5 minutes then press the rest switch.

If the treadmill still will not operate, please call Technical service at 1.888.800.1167.

2. Check the house electrical breaker box and the circuit breaker for the room the treadmill is located in. If it has tripped, reset or have an electrician replace the breaker in home.

Treadmill walking belt slows during use:

1. Check to make sure the treadmill is securely plugged into an UL-listed surge protector, rated at 15 amps, with a 14-gauge cord of five feet or less and the surge protector is securely plugged into the outlet. If the treadmill still will not operate, please call Technical service at 1.888.800.1167.

Treadmill walking belt slips or is not centered on rear roller:

Refer to the Belt Adjustment section of this manual. If you require additional assistance please call Technical service at 1.888.800.1167.

